



## Felted Snowflake Coasters and Cuff

from Knit Picks

These felted projects are designed for streamlined knitting and felting for holiday decorating and gift giving. Several repeats of the coaster design are knitted in the round so that you can make several at a time.

After you cast-off the round, felt the whole thing, and then you can easily cut each coaster.

A second round of felting finishes off the cut edges.

The coffee cup cuffs are knit in the round one at a time on DPNs, but if you use two circular needles, you can knit two at the same time.

### COASTERS

Each coaster requires 28 stitches. **This includes the buffer stitches for cutting between the coasters.** Once you have decided how many coasters you want to knit, multiply that number by 28 and loosely cast on those stitches. Four coasters fit nicely around a 24" needle and are a nice number for gift giving. Join the round, being sure not to twist the stitches. Knit rows 1-33 of the Coaster chart. Cast off loosely.

As you knit the colorwork, weave the contrasting yarn along the back as you work over any sections that cover more than 3 stitches wide. That way you won't have any long loops of yarn along the back.

**It is very important to cast on and off loosely so that the top and bottom edges felt as evenly as possible.**

Felt the round until the fabric is lightly felted. Cut the coasters. Run the coasters through a second hot water agitation (or more) until you are satisfied with the felting and the edges have a nice finish.

### CUFF

Using DPNs or two 24" circular needles, loosely cast on 60 stitches. Following the Cuff chart, repeat the pattern twice, working the increases between the two snowflake patterns. Use a backward loop to add a stitch of the correct color in the increase section. Cast off loosely and felt.

### FELTING

#### General directions:

Use the hot water wash and standard agitation settings of a top loading washing machine. Set your washing machine for a medium or large load. Pour 2 to 3 tablespoons liquid laundry detergent or liquid dishwashing soap in while the machine fills up with hot water. Put in your items to be felted and an old pair of jeans or a couple old towels (for abrasive action). Run through the agitation cycle. If your washer does not have a hot rinse option, stay nearby and stop the machine before the rinse cycle begins.



#### Finished Size:

Coasters: approx. 3¼" x 3¼" after felting

Cuff: approx. 3¼" high x 5" circumference at widest point after felting

#### Yarn:

Knit Picks *Telemark*

(100% Peruvian Wool, 103 yards/50 grams)

For 4 coasters and one cuff:

Cobalt 23930 (MC), 1 ball

Drift 23935 (CC), 1 ball

#### Needles

Size 4 (3.5 mm): 24" circular for coasters

Size 4 (3.5 mm): DPN or two 24" circulars for cuff

Adjust needle size if necessary to obtain correct gauge.

#### Gauge:

24 sts = 4" in stockinette stitch.

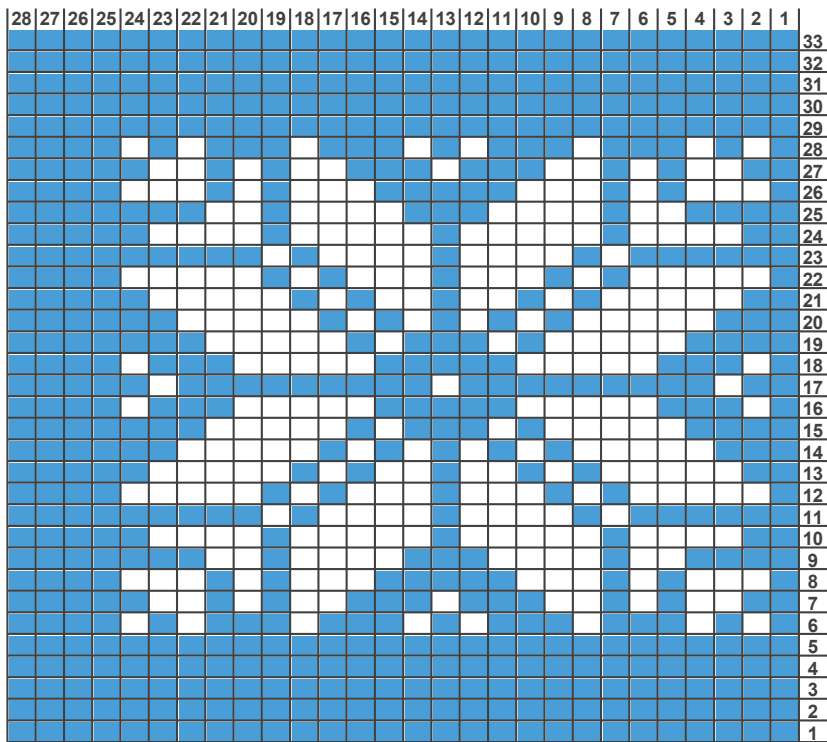


50517

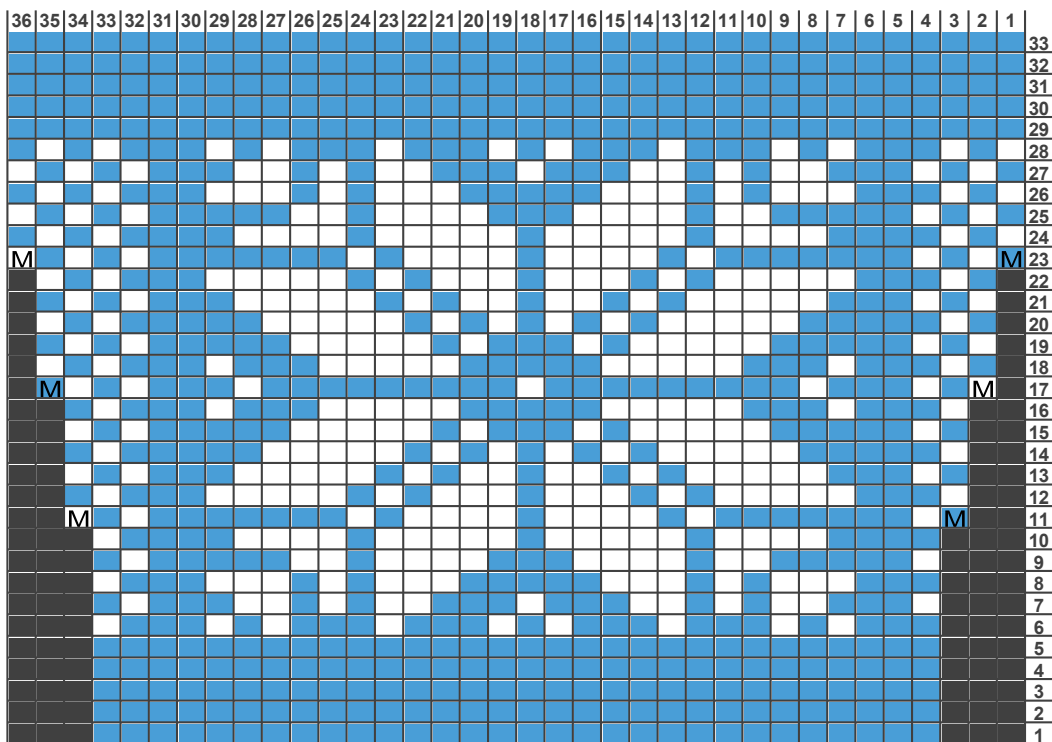
© Copyright Knit Picks®. All rights reserved.

For private, non-commercial use only. Please see our website for terms of use.

Knitpicks.com. 1(800) 574-1323






**Coaster Pattern**



**Cuff Pattern**

**Note:** The grey areas indicate increases. Use an E-wrap increase in appropriately colored yarn to maintain color pattern.

Legend:

-  No Stitch
-  knit
-  Increase

Abbreviations		cont	continue	pat	pattern	sl1k	slip 1 kwise
"	inches	dec	decrease(es)	pm	place marker	sl1p	slip 1 pwise
( )	rep inst bet ( )'s as many times as noted afterward	DPN(s)	double pointed needle(s)	pop	popcorn	sm	slip marker
*	rep inst foll single * as directed	fl	front loop(s)	pr	previous row	ssk	sl, sl, k these 2 sts tog
**	rep inst bet **'s as many times as noted after	foll	follow(s)(ing)	prev	previous	ssp	slip, slip, purl
[ ]	rep inst bet [ ]'s as many times as noted after	inst	instructions	pssso	pass slipped stitch over	sssk	sl, sl, sl, k these 3 sts tog
alt	alternate	K, k	knit	pwise	purlwise	st st	stockinette stitch
approx	approximately	k2tog	knit two sts together	R	row	sts	stitch(es)
beg	begin/beginning	kfb	knit through the front and the back of the stitch	rem	remain(ing)	tbl	through back loop
bet	between	kwise	knitwise	rep	repeat	tfl	through front loop
BO	bind off	LH	left hand	Rev st st	reverse stockinette stitch	tog	together
CC	contrast color	lps	loops	RH	right hand	w&t	wrap & turn (see specific instructions in pattern)
cm	centimeter(s)	m	meter	rnd(s)	round(s)	WE	work even
cn	cable needle	M1	make one stitch	RS	right side	WS	wrong side
CO	cast on	MC	main color	sk	skip	wyib	with yarn in back
		mm	millimeter(s)	sk2p	sl 1, k2tog, pass slipped stitch over	wyif	with yarn in front
		ndl(s)	needle(s)		k2tog; 2 sts dec	yd(s)	yard(s)
		oz	ounce	skp	sl, k, pssso: 1 st dec	yfwd	yarn forward
		P up	pick up	sl	slip	yo	yarn over
		P, p	purl	sl st	slip stitch(es)	yon	yarn over needle
		p2tog	purl 2 sts together			yrn	yarn around needle